

An Outbreak of *Shigella sonnei*
at a Denver Hotel

September 4-7, 2003

Ann Woo-Ming
Colorado Dept of Public Health

Brief Overview

- *Shigella sonnei*
 - Transmission
 - Communicability
 - Reservoirs
 - Incubation time
 - Frequency

Shigella sonnei in Colorado 2003

- Common Sources
 - Daycare centers
 - Shelters
 - Hotel

Frequency of *S. sonnei* / *flexneri* in Colorado 2003

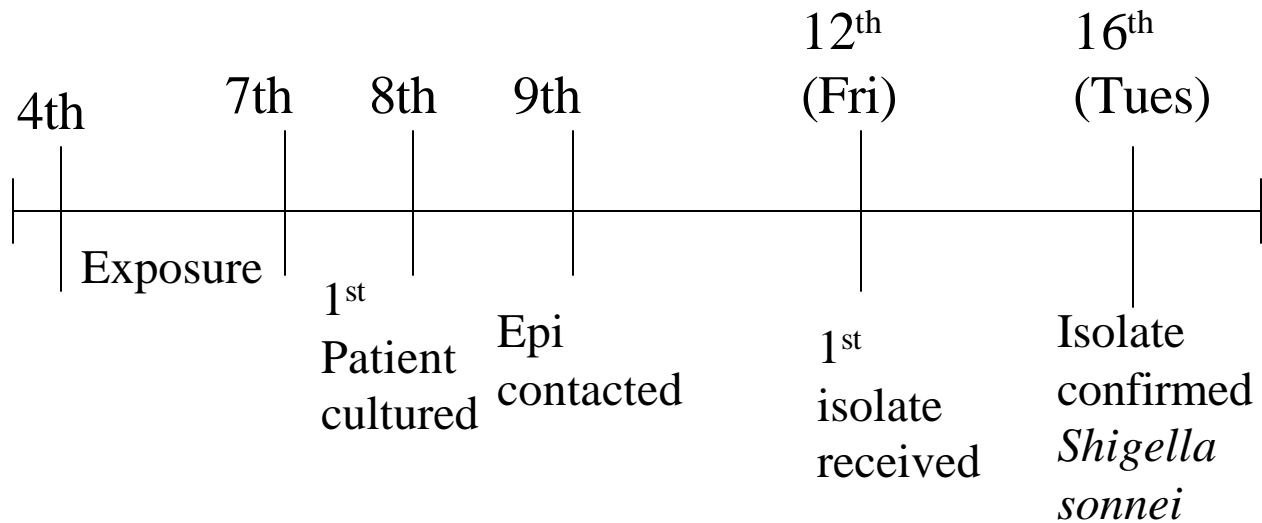
Serotype	# of isolates
<i>S. sonnei</i>	250
<i>S. flexneri</i> (nontypeable)	12
<i>S. flexneri</i> type 1	4
<i>S. flexneri</i> type 2	15
<i>S. flexneri</i> type 3	10
<i>S. flexneri</i> type 4	13
<i>S. flexneri</i> type 5	0
<i>S. flexneri</i> type 6	11

Hotel Outbreak

- Investigation
 - An Infection Control Nurse contacts epidemiology division
 - Epidemiologists conduct interviews
 - Additional people confirm diarrheal illness
- Denver area hotel implicated
 - 180 room hotel
 - Banquet/reception facilities
 - Lounge/restaurant with breakfast, lunch and dinner offered

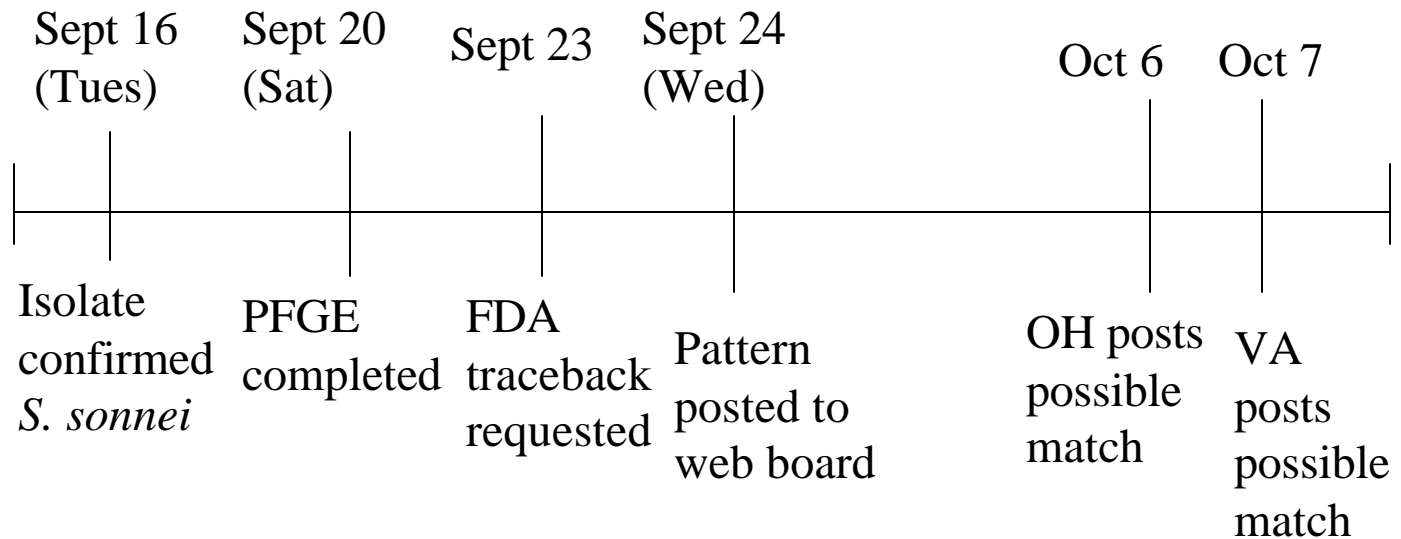
Time Line I

September 4-16



Time Line II

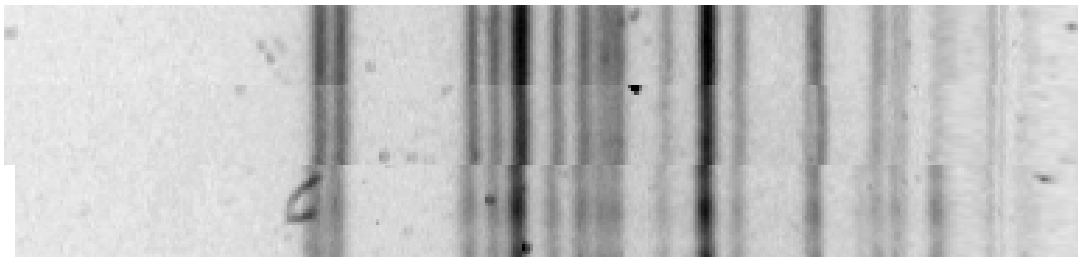
September 16-----October 7



Laboratory Investigation

- PFGE Patterns

- Colorado Pulsotypes

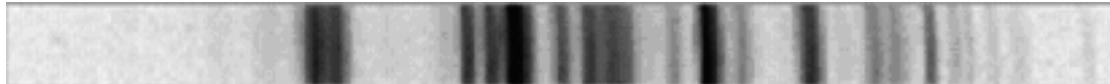


PHM-2003008571 J16X01.0380

PHM-2003008585 J16X01.0380

PHM-2003008589 J16X01.0381

- VA Pulsotype



VA 03-1181

J16X01.0387

- Antimicrobial Susceptibility

- Susceptible to Ciprofloxacin and Ceftiaxone

- Resistant to Trimethoprim-sulfa and Ampicillin

The Culprit

- Breakfast buffet
 - Honeydew melon
 - Food preparation
 - Temperature monitoring
- Honeydew melon
 - 2 distributors
 - Quality of fruit

Summary

- PFGE
 - Outbreak utilization
 - Multiple pulsotypes
- Lab/Epi Interaction
 - Separate buildings
 - Communication

Thanks

I'd like to thank a few people who helped me
put this together.

Desmond Jennings

Alicia Cronquist

Dana Ferguson

And my husband who has had to listen to this
presentation every night for the last week