



## An Introduction CORE Network

FDA's New Approach to Managing Foodborne Outbreak  
Surveillance, Response and Post-Response Efforts

Presented by Carla Tuite, LCDR, USPHS  
Response Team Leader

CORE

---

August 30, 2012

# What is CORE?

- FDA's Coordinated Outbreak Response and Evaluation Network
- Launched August 1, 2011
- Created to manage Surveillance, Response, and Post-response activities related to incidents of illness linked to FDA-regulated human and animal food
- Builds upon the best in FDA's current outbreak response efforts
- Designed to streamline and strengthen FDA's efforts to:
  - ★ **Prevent**
  - ★ **Detect**
  - ★ **Investigate**
  - ★ **Respond**
  - ★ **Evaluate**
  - ★ **Apply Lessons Learned**

# CORE Goals

- Streamline outbreak-related processes, which were previously dispersed throughout the FDA
- Enhance transparency and working relationships with our internal and external partners

# CORE Mission and Vision

## *Mission*

To coordinate, conduct, and improve FDA's preparedness, response, and post-response efforts involving human and animal foodborne outbreaks of illness, both within the Agency and in collaboration with our partners

## *Vision*

A safer food supply through a systematic, science-based approach to preparedness, early detection, rapid response, and post-response investigations of human and animal food outbreaks of illness

# CORE Functional Areas

- Signals and Surveillance
- Response
- Communications
- Post-Response

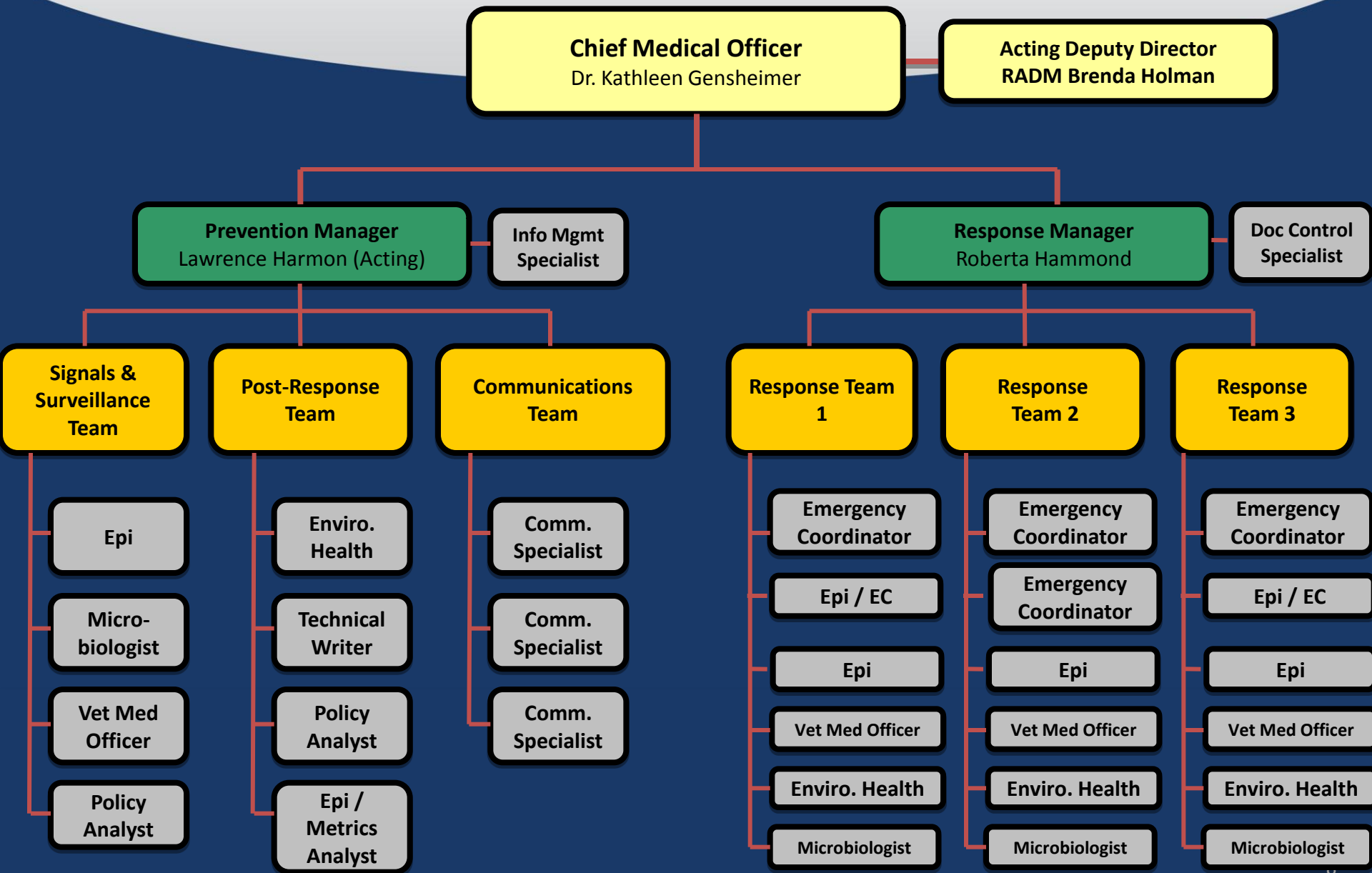
# CORE Scope

- Monitoring the early investigation of clusters or illness
- Coordinating complex outbreak response activities across CFSAN, CVM and ORA
- Responding to outbreaks where an in-depth investigation is needed
- Determining root causes, where appropriate
- Ensuring implementation of lessons learned into preventive strategies to minimize future public health threats

# CORE Interaction with External Partners

CDC	USDA	States
Works with CORE Signals & Surveillance Team to discuss emerging outbreaks	Weekly meetings with CORE Signals & Surveillance Team and CDC to discuss emerging outbreaks	CORE works through FDA District Offices with state and local public health and agriculture officials on investigations and inspections
Works with CORE Response Teams on outbreaks related to FDA-regulated human and animal foods	FSIS and other USDA offices work closely with CORE Response Teams on outbreaks associated with dual-jurisdiction products	Rapid Response Teams (RRTs) continue to work with FDA District Offices

# CORE Organizational Structure





# CORE Program Structure

- **Chief Medical Officer (Kathleen Gensheimer)**
  - ★ Final Decision Maker for all Outbreak Response Operations
  - ★ Agency's Spokesperson on outbreaks
  - ★ Direct Line of Communication with those responding to outbreaks
- **Acting Deputy Director (RADM Brenda Holman, USPHS)**
  - ★ Supports CMO
  - ★ Advises on Strategic Direction to Response
- **Two Managers**
  - ★ Response Manager (Roberta Hammond)
  - ★ Acting Prevention Manager (Lawrence Harmon, Jr.)

# CORE Prevention: **Signals and Surveillance Team**

## Specific Roles & Responsibilities

- Analyzes internal and external information for illness trends and potential clusters of illness.
- Monitors emerging clusters of illness.
- Communicates regularly with CDC and USDA to discuss emerging human and animal food outbreaks.
- Provides data and trending information for situational awareness reports.

# CORE Response Teams: Specific Roles & Responsibilities

- Coordinates information flow across organizations during a response.
- Along with our internal and external partners, determines strategy for and manages the implementation of response activities.
- Conducts traceback investigations in collaboration with FDA District Offices.
- Evaluates environmental, epidemiologic, and laboratory data to inform assignments and outbreak investigations.
- Applies ICS principles during response efforts

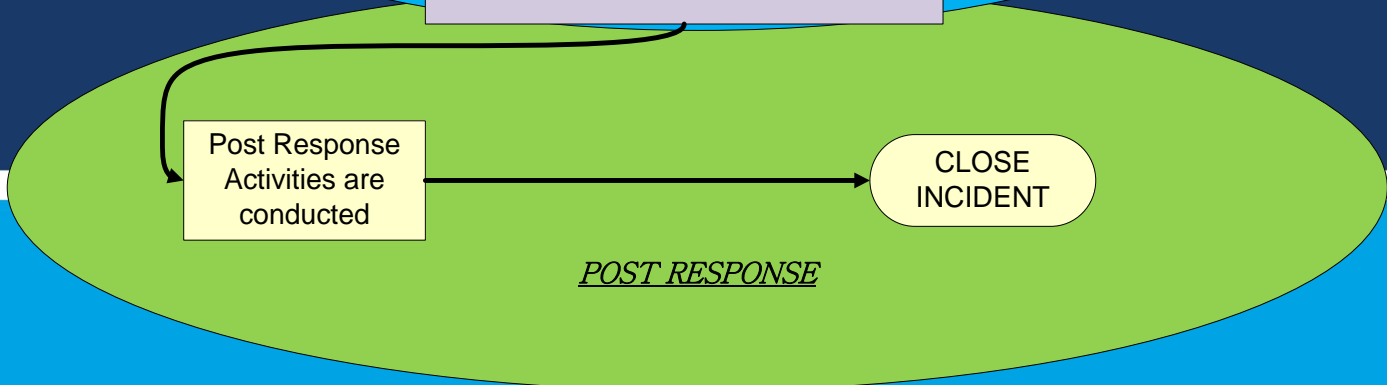
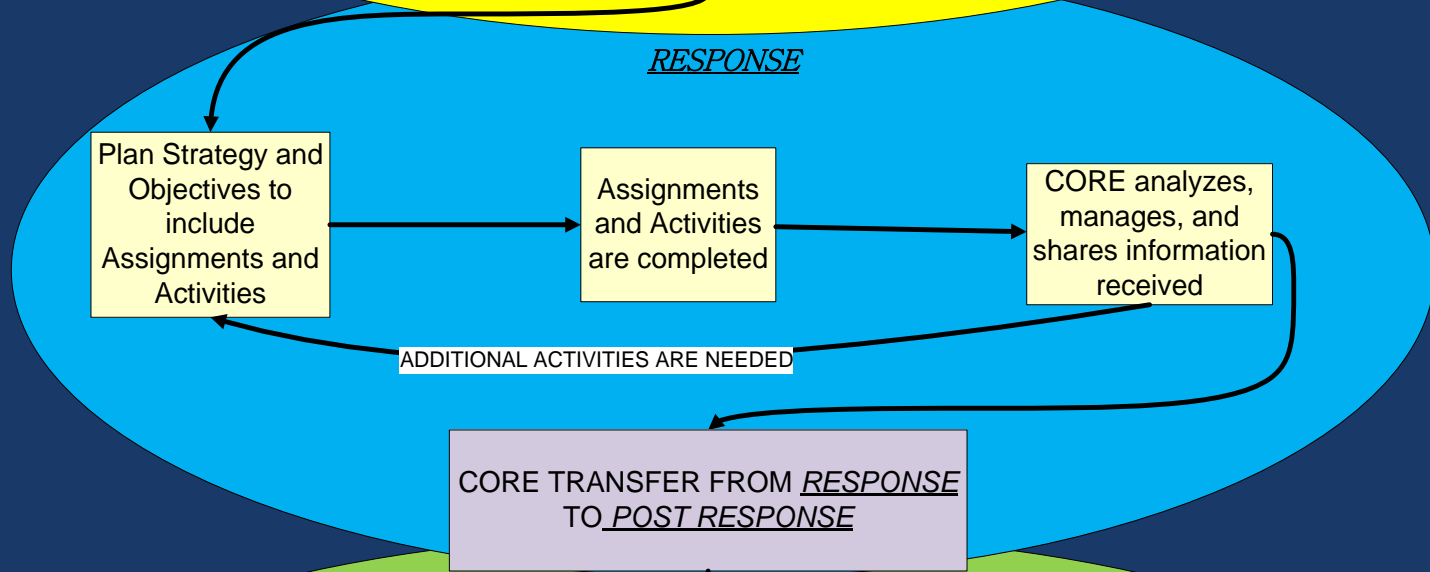
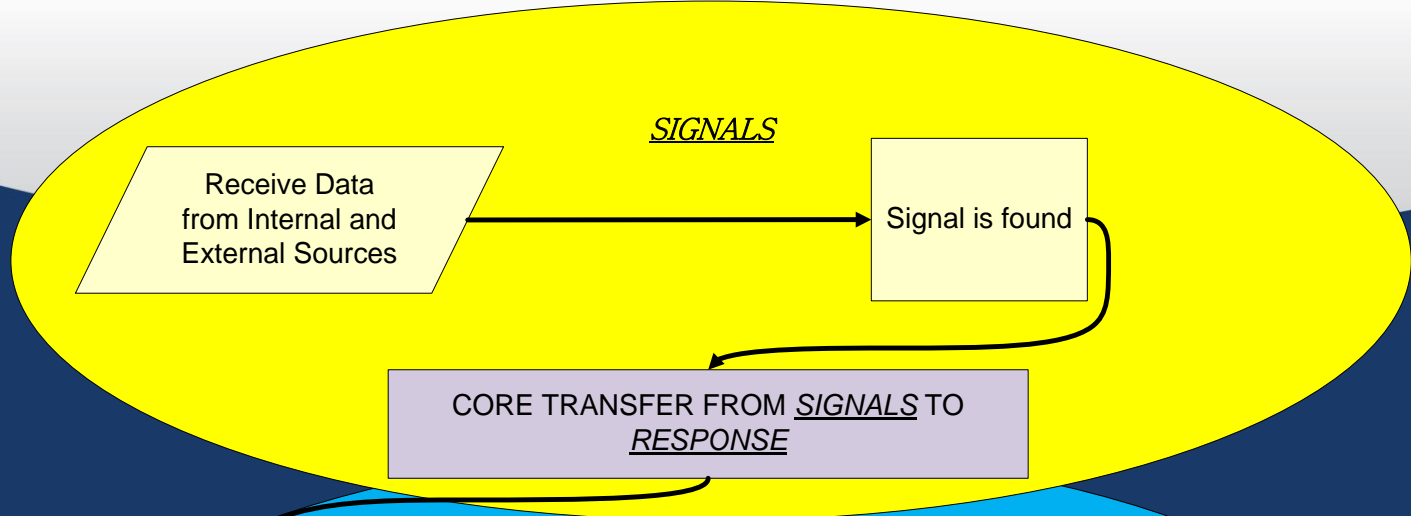
# CORE Prevention: Post-Response Team

## Specific Roles & Responsibilities

- Performs environmental assessments/root-cause analysis.
- Integrates outbreak findings into FDA guidance, policies, and regulations for human and animal food.
- Publishes findings on outbreak investigations and environmental assessments.
- Develops and maintains performance metrics.
- Maintains the CORE Outbreak Database
- Conducts lessons learned and lessons learned reports following an outbreak.

# CORE Communications Team: Specific Roles & Responsibilities

- Provides strategic communications.
- Ensures consistent and coordinated messaging during outbreaks.
- Develops talk points, FAQs, and web copy.
- Participates on cross-agency workgroups to enhance outbreak communications efforts with CDC and USDA.
- Works with internal and external stakeholders



# CORE Network In Action

- Listeria in Cantaloupes
- S. Infantis in Diamond Dog Food
- S. Bareilly/S. Nchanga in Tuna
- Mycobacterium in Tattoo Ink
- S. Agona in Papayas
- S. Enteritidis in Pine Nuts
- And many more!

# CORE Network

## The Summary

- **The CORE Network**

- ★ Builds Upon FDA's Established Best Practices
- ★ Incorporates Lessons Learned
- ★ Expands FDA's Monitoring and Post-Response Capabilities
- ★ Investigates and Documents Underlying Causes
- ★ Drives Prevention-Based Food Safety Policies

### **Web page:**

<http://www.fda.gov/Food/FoodSafety/CORENetwork/default.htm>



# Questions?