

What to Expect: Different, Same and New

Brenda Brown
PulseNet IT Support

InFORM 2015 Conference
November 2015

DIFFERENT, SAME, NEW

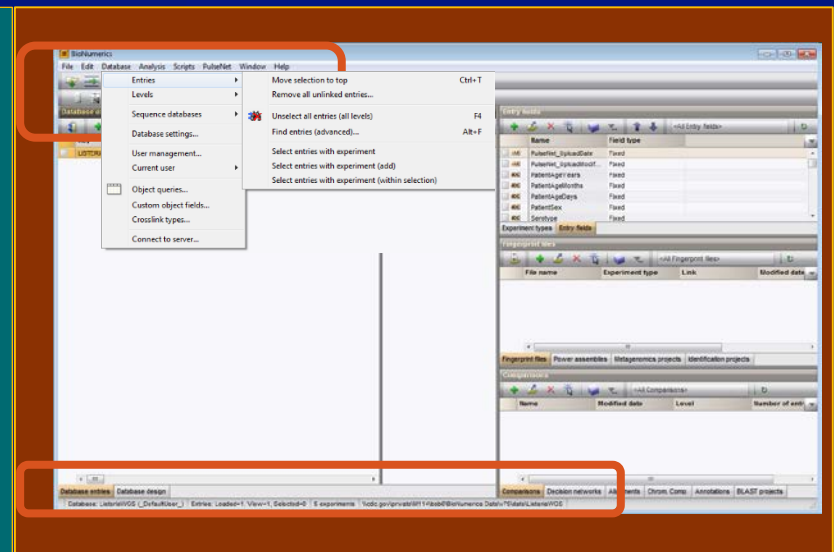
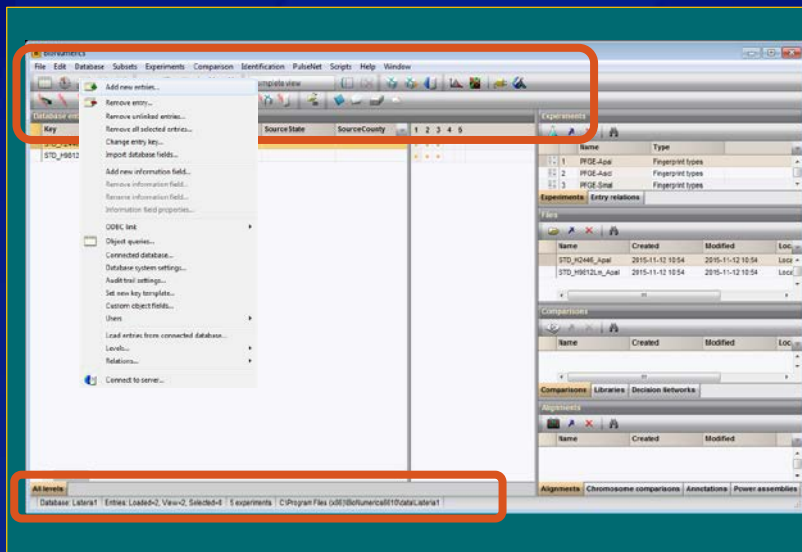
- **BioNumerics Software**
- **Client Databases**
- **Authenticating and Connecting to National Databases**
- **Updates**
- **IT Support**
- **NCBI Uploader**

Different: BioNumerics Software

Database – icons, menus, type of database

v5/v6 - PFGE

v7.5 - WGS



BioNumerics Database Types

Local

- An internal database structure
- Only BioNumerics can bring the data together because the data components are in different folders
- Can be on the computer or on the network
- Only one person can access the database at a time

Connected

- An external ODBC-compatible database engine
- External applications allow access to the data
- Can be on the computer, network or server
- Several people can access the database at the same time

Different: Client Databases

v5/v6

v7.5

Local or Connected

Connected

- MS Access
- SQL Server
- Oracle
- MySQL

Connected Only

- SQLite
- MS Access
- SQL Server
- Oracle
- MySQL

Different: Client Databases

Form for demographic information

v5/v6 - PFGE

v7.5 - WGS

This screenshot shows the 'Entry properties - STD_H2446' form. It is divided into several sections: 'Source' (City, County, State, Country), 'Patient' (Age, Sex), 'Serotype' (L. monocytogenes), 'Outbreak', 'Source Type', 'Type Details', 'Source Site', 'Travelled To', 'Exposure', 'Isolate status', 'Other State Isolate number', 'CDC_ID', 'Upload Date', 'Isolate Date', 'Receive Date', 'RiboPrinter@', 'AccuProbe@', 'Listeria Active Surveillance', and 'Species'. A 'Patterns' section contains a table with columns 'Ascl', 'Apal', and 'Smal', and rows for 'STD_H2446_AscI.1', 'STD_H2446_Apal.1', and 'STD_H2446_Smal.1'. Buttons for 'Antibiotics...', 'Match with list', 'OK', 'Biochemical...', and 'Cancel' are also present.

This screenshot shows the 'PulseNet entry form'. It includes fields for 'Key' (LISTERAWS0101001), 'IsolatDate', 'ReceivedDate', 'OtherStateIsolate', 'Source Information', 'Location and Patient Information', and 'Sequence Information'. The 'Source Information' section includes fields for Source Type, Type Details, Source Site, Traveled To, Exposure, and NARMS-EB. The 'Location and Patient Information' section includes Source City, Source Date, Source Country, Patient Age Years, Patient Age Months, Patient Age Days, and Patient Sex. The 'Sequence Information' section includes NCBI Accession, WGS_id, MLST_Jacc_ST, SRP_ID, CC-MLST, cdc_id, SequenceRun_id, Serotype, ANI, AMB Coverage, Lineage, GENUS, Species, and Subspecies. Buttons for 'OK' and 'Cancel' are at the bottom right.

Same: Authenticating, Connecting, Support

v5/v6

v7.5

| | |
|-----------------------|--------------------|
| Authenticating | to the firewall |
| Connecting to the | National Databases |
| Support from PulseNet | and Applied Maths |

New: Updates, local IT, network share, NCBI Uploader

v7.5

- **Updates from the national databases**
- **Additional local IT support for setup, database access and troubleshooting**
- **Shared network space for additional data separate from the connected database**
- **NCBI Uploader – separate application that allows you to manage your jobs after they have been submitted to NCBI**

New: NCBI Uploader

Manage your jobs submitted to NCBI

v7.5

NCBI Uploader Refresh

Show 10 entries Search:

| Job | ID | Created | Iteration | Status | User | Details |
|--------------|--------------------------------------|-----------------------|-----------|----------|------|---|
| 2015L-6726 | 8a9b66d0-aa7a-4c15-979b-0e709842769e | 11/12/2015 5:43:56 PM | 4 | finished | | NCBI submission status: processed-ok <input type="button" value="Q"/> <input type="button" value="C"/> <input type="button" value="X"/> |
| J1815 | 923c0a7b-e13c-485a-aa7c-bdb256b4ce2e | 11/12/2015 5:43:56 PM | 4 | finished | | NCBI submission status: processed-ok <input type="button" value="Q"/> <input type="button" value="C"/> <input type="button" value="X"/> |
| PNUSAL001864 | 85e482f7-e9fc-4071-bf03-ecbf6d2c0a47 | 11/12/2015 5:42:58 PM | 3 | finished | | NCBI submission status: processed-ok <input type="button" value="Q"/> <input type="button" value="C"/> <input type="button" value="X"/> |
| PNUSAL001862 | 44c1ac10-e09c-4132-9795-868a89c4d8c8 | 11/12/2015 5:42:58 PM | 3 | finished | | NCBI submission status: processed-ok <input type="button" value="Q"/> <input type="button" value="C"/> <input type="button" value="X"/> |
| PNUSAL001863 | 399716f1-6f65-4058-ac6a-a7465db2c23f | 11/12/2015 5:42:58 PM | 3 | finished | | NCBI submission status: processed-ok <input type="button" value="Q"/> <input type="button" value="C"/> <input type="button" value="X"/> |
| PNUSAL001849 | 08c2d552-6576-45de-9901-5ca26c100f55 | 11/12/2015 5:42:57 PM | 3 | finished | | NCBI submission status: processed-ok <input type="button" value="Q"/> <input type="button" value="C"/> <input type="button" value="X"/> |
| PNUSAL001826 | 3460a0a2-0cfe-4b4d-8b8c-476d5b6ec2ef | 11/12/2015 5:42:57 PM | 3 | finished | | NCBI submission status: processed-ok <input type="button" value="Q"/> <input type="button" value="C"/> <input type="button" value="X"/> |

Showing 1 to 7 of 7 entries < Previous 1 Next >

© 2014-2015 [Applied Maths](#)

What to Expect

- **BioNumerics Software**
- **Client Databases**
- **Authenticating and Connecting to National Databases**
- **Updates**
- **IT Support**
- **NCBI Uploader**

Thank you...I'm here to help!



For more information please contact Centers for Disease Control and Prevention

1600 Clifton Road NE, Atlanta, GA 30333

Telephone: 1-800-CDC-INFO (232-4636)/TTY: 1-888-232-6348

Visit: www.cdc.gov | Contact CDC at: 1-800-CDC-INFO or www.cdc.gov/info

The findings and conclusions in this report are those of the authors and do not necessarily represent the official position of the Centers for Disease Control and Prevention.

National Center for Emerging and Zoonotic Infectious Diseases
Division of Foodborne, Waterborne, and Environmental Diseases

