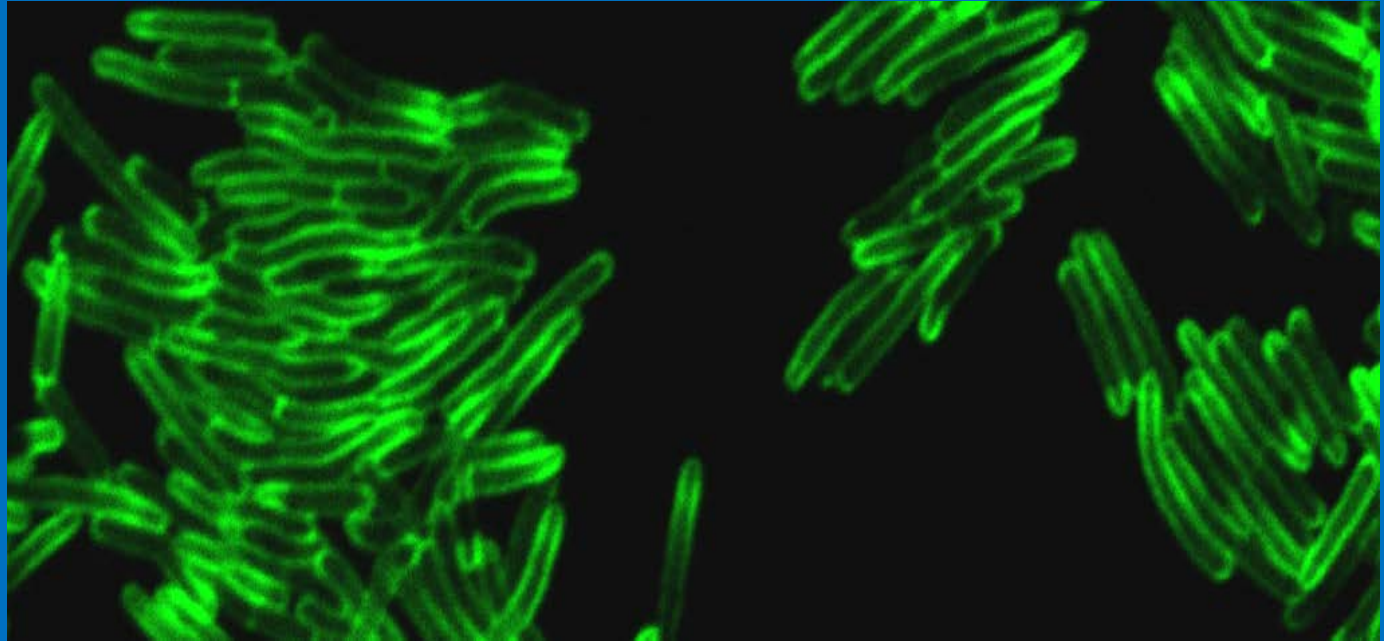


GeneXpert MTB/RIF Performance Characteristics in a State Public Health Laboratory Context



Ken Jost M(ASCP)
Texas Dept. of State Health Services
June 9, 2015

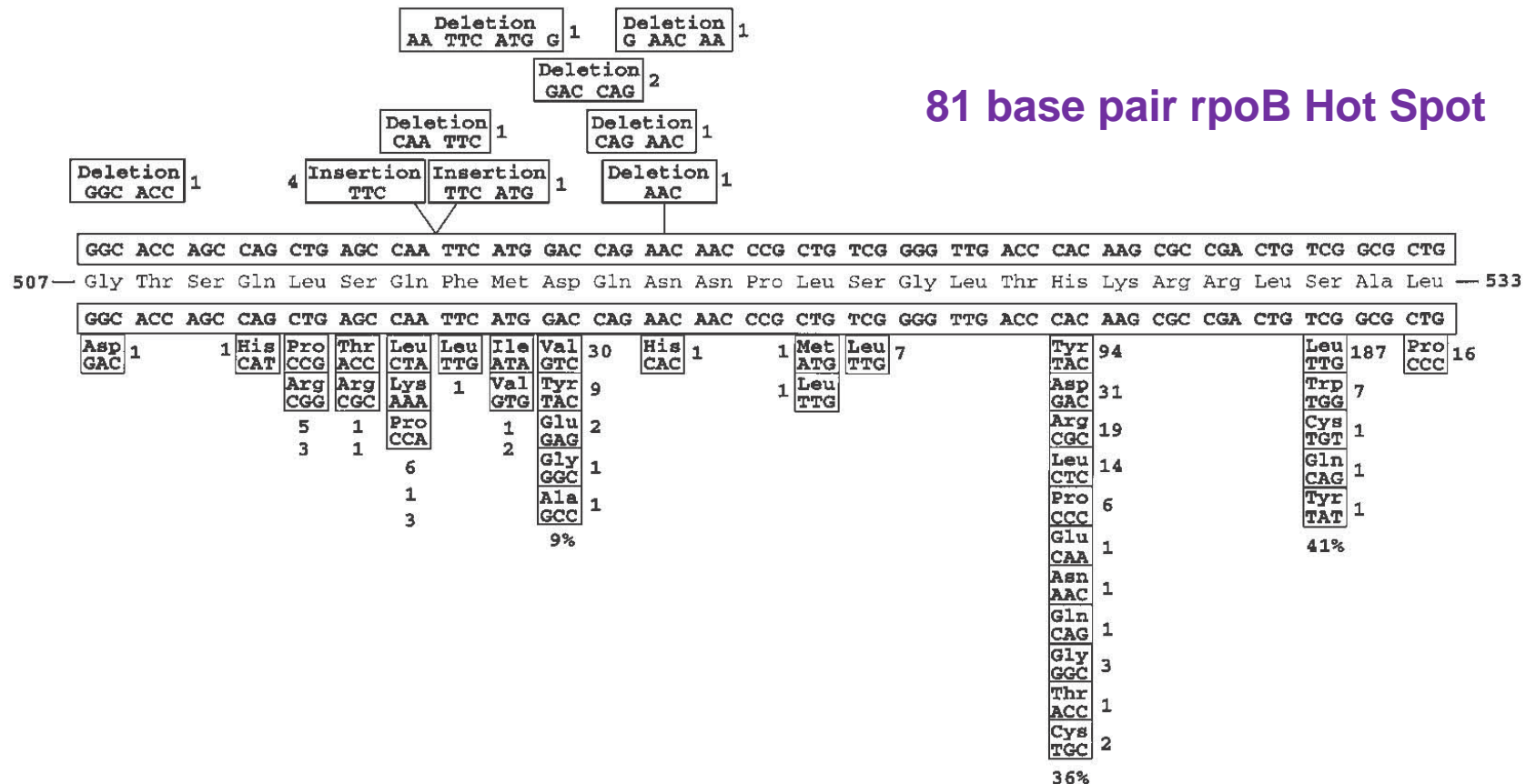
APHL 9th National
Conference on
Laboratory Aspects of TB

Outline

- Rifampin Resistance Background
- Xpert Mechanism
- Texas Public Health TB Lab Overview
- Xpert Performance
 - Detection of Mtb complex
 - Detection of Rif resistance
 - Effects of specific mutations

Genetics of Rifampin Resistance in *M. tuberculosis*

81 base pair rpoB Hot Spot



rpoB Mutations

- Synonymous or Silent Mutation
 - Change in the nucleotide sequence
 - No change in the amino acid or protein
 - Not associated with drug resistance
 - Not common but neither is rifampin-R in U.S.
- Nonsynonymous Mutation
 - High Rifamycin MIC
 - Abandon all hope to use rifamycin
 - Van Deun or Disputed mutation
 - low rifamycin MIC increase
 - Rifampin may test susceptible, rifabutin may be active

GeneXpert MTB/Rif Assay Design

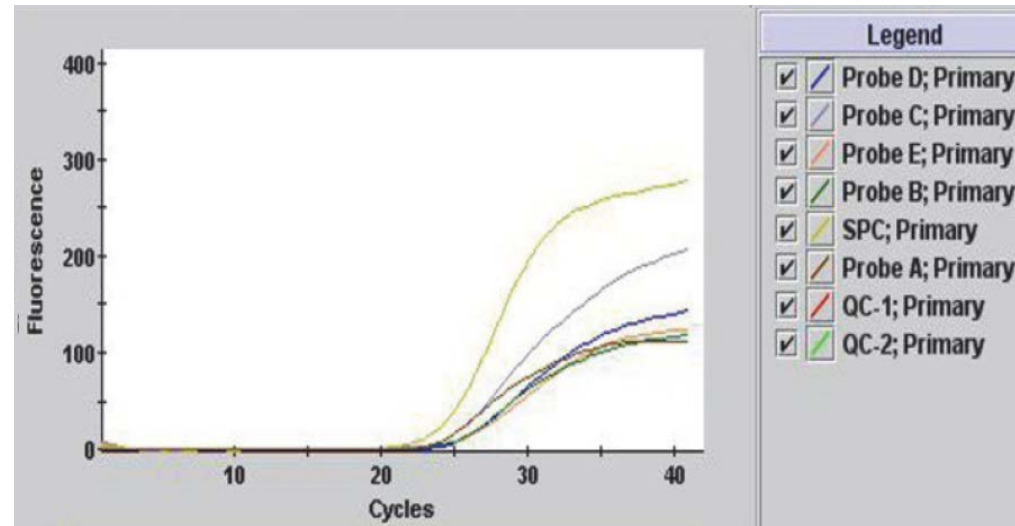
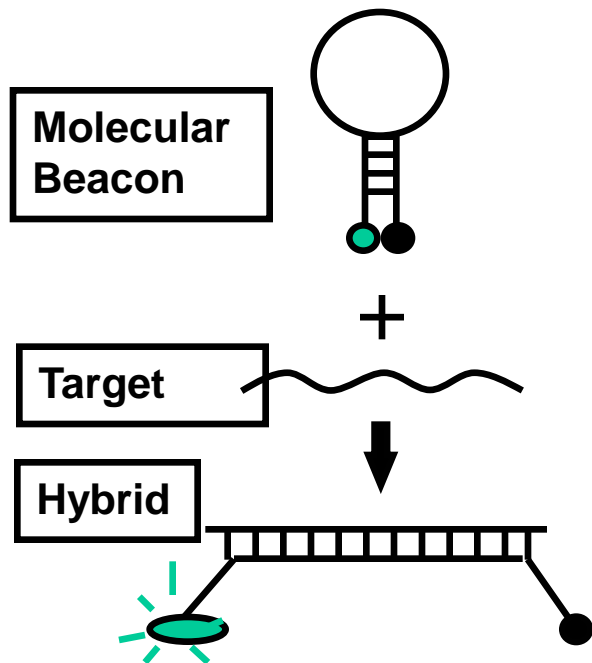
A C D

5' - GCACCAGCCAGCTGAGCCAATTCATGGACCAGAACCAACCCGCTGTCGGGGTTGACCCACAAGCGCCGACTGTCGGCGCTG - 3'

3' - CGTGGTCGGTCGACTCGGTAAAGTACCTGGTCTTGTGGGCGACAGCCCAACTGGGTGTTTCGCGGCTGACAGCCGCGAC - 5'

B E

The MTB assay target is the 81 bp rifampin resistance determination region of the *rpoB* gene.



Example of Rif-Susceptible Profile – all 5 probes and SPC are positive

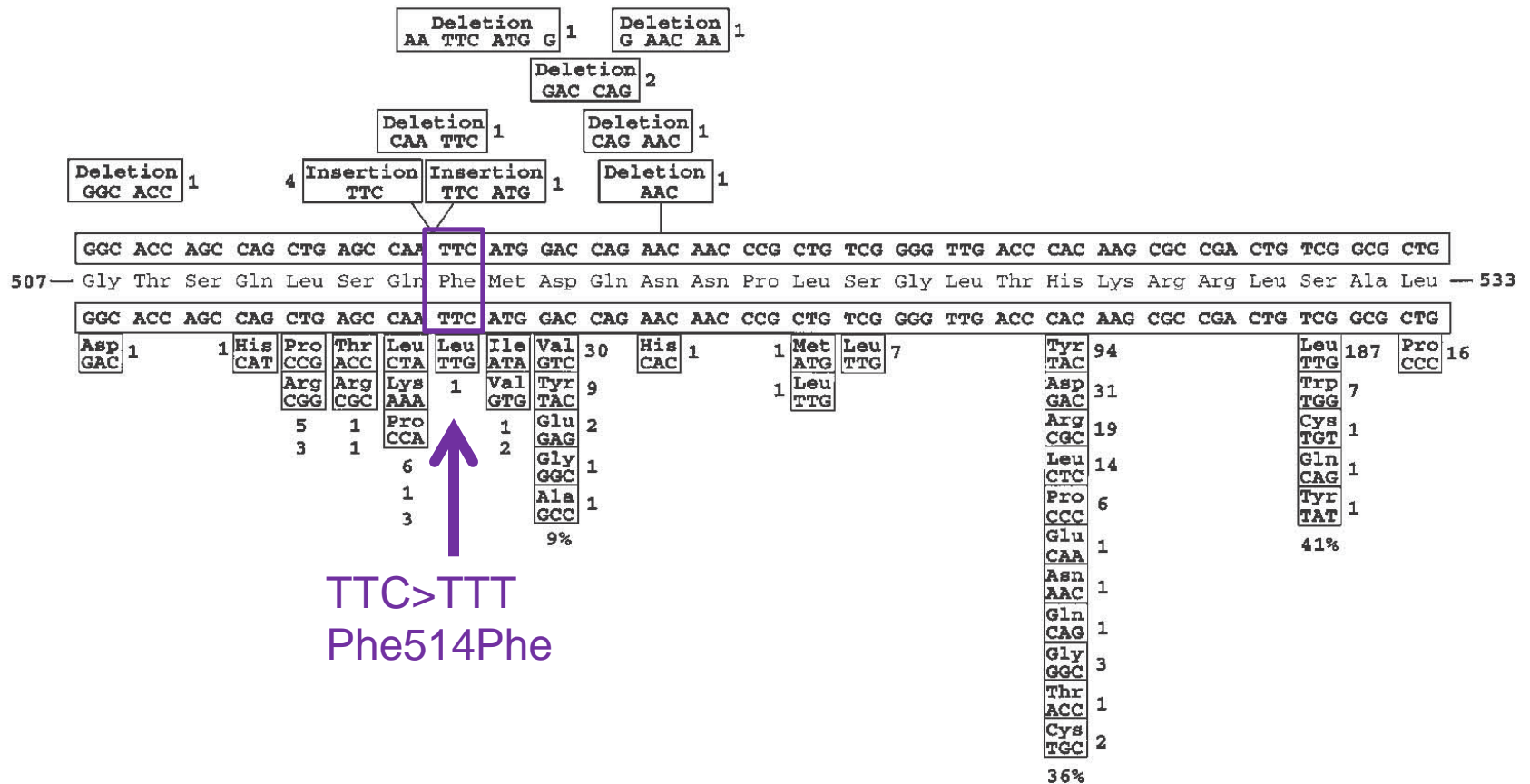
Each probe is labeled with a different fluorophore, permitting simultaneous detection of the presence of wild type.

Xpert Algorithm

- “MTB DETECTED” is reported when at least two probes result in Ct values within the valid range and a delta Ct min (the smallest Ct difference between any pair of probes) of less than 2.0.
- “Rif Resistance NOT DETECTED” is reported if the delta Ct max (the Ct difference between the earliest and latest probe) is ≤ 4.0 .
- “Rif Resistance DETECTED” is reported if the delta Ct max is > 4.0 .

Ct	Mtb Amount Detected	Typical AFB Smear Result
<16	High	3+ or 4+
16-22	Medium	2+
22-28	Low	1+
>28	Very Low	Negative

Silent Mutations



Silent Mutation

PROBE A

5' - GCACCAGCCAGCTGAGCCAATTCATGGACCAG

507 508 509 510 511 512 513 514 515 516 517

3' - CGTGGTCGGTCGACTCGGTTAAGTACCTGGTC

PROBE B

Silent Mutation

PROBE A

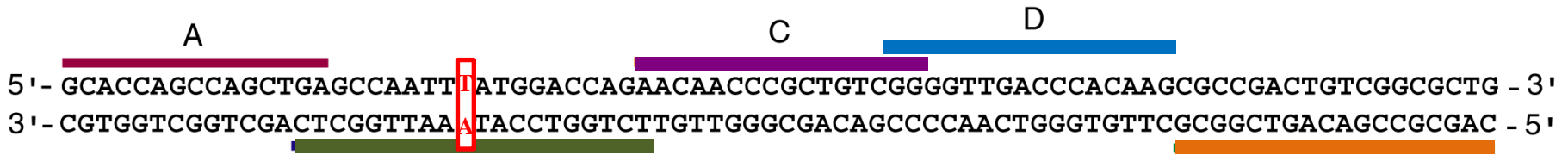
5' - GCACCAGCCAGCTGAGCCAATTTATGGACCAG

507 508 509 510 511 512 513 514 515 516 517

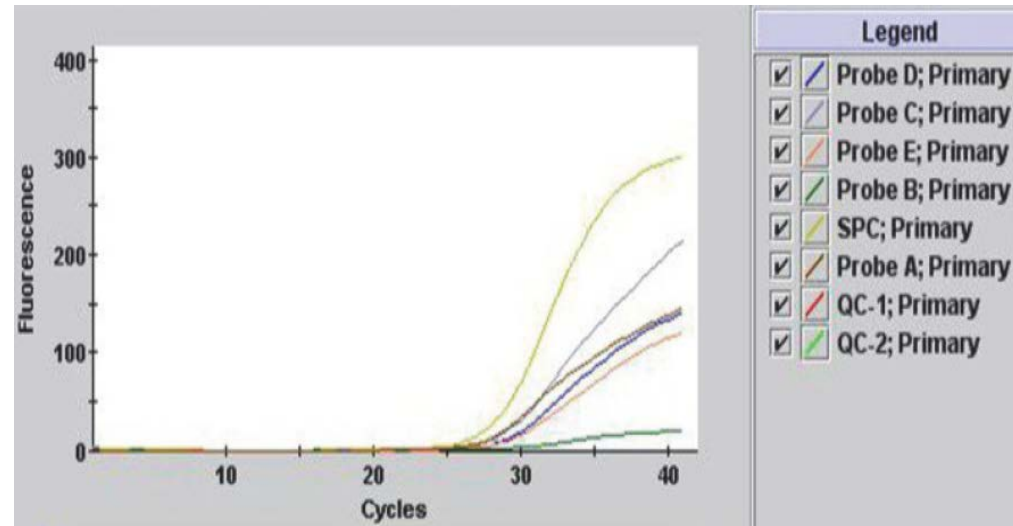
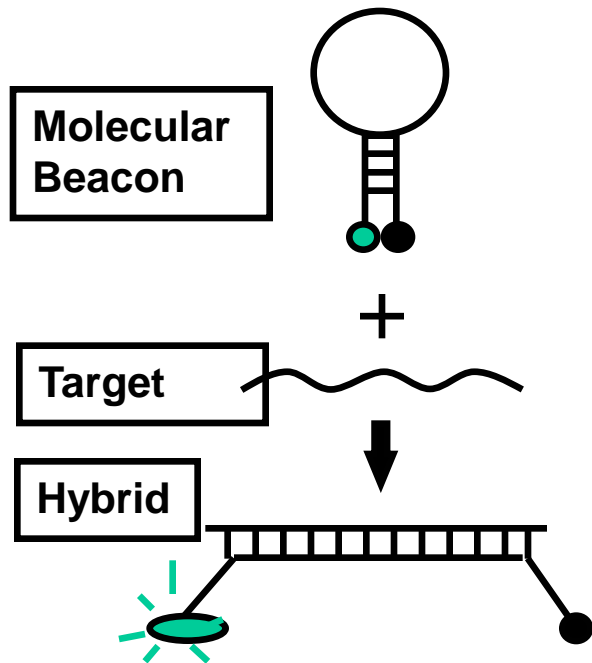
3' - CGTGGTCGGTCGACTCGGTTAAAATACCTGGTC

~~PROBE B~~

GeneXpert MTB/Rif Assay Design



The MTB assay target is the 81 bp rifampin resistance determination region of the *rpoB* gene.



Example of Rif-Resistant Profile – 4 probes and SPC are positive; Probe B is negative

Each probe is labeled with a different fluorophore, permitting simultaneous detection of the presence of wild type.

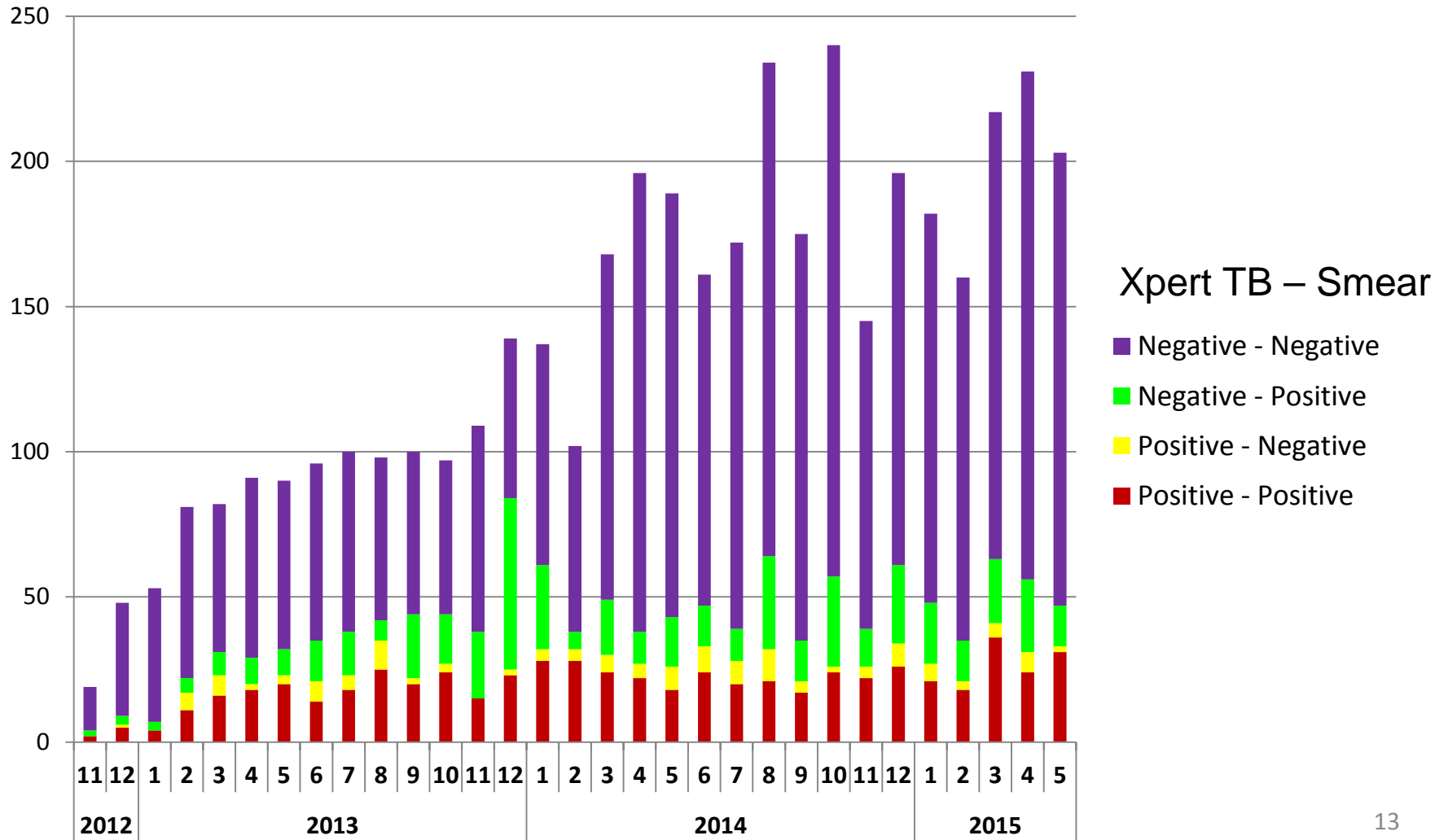
★ Public Health TB Lab
✿ Binational Project



DSHS-Austin NAAT Indications

- No TB history in past year
- Smear positive reflex
- Provider request on submission form
 - If initial specimens are smear negative, & one is NAAT negative, subsequent specimens are ineligible for 2nd NAAT for 2 months post-collection date
 - 2nd NAAT performed upon special request
 - Typically for potential high profile case/susceptible population exposed
 - 1.1 NAAT performed per patient
 - Binational patients excluded

No. of Specimens Tested by Xpert at DSHS



Correlation of AFB Smear & Xpert DNA Amount

435 Specimens with GeneXpert MTBC Positive Results at DSHS
Austin Nov 2012- Aug 2014, 1.7 years, (2,545specimens)

DNA Amount*	% of Smear Grade				
	>10 AFB	1-10 AFB	<1 AFB	1 or 2 AFB/smear	Negative
High	68%	31%	3%	0%	0%
Medium	30%	57%	47%	18%	5%
Low	2%	10%	42%	41%	48%
Very Low	0%	2%	8%	41%	48%
Total	100%	100%	100%	100%	100%

*DNA Amount	Ct
High	<16
Medium	16-22
Low	22-28
Very Low	>28

=82% of each smear grade fell within 2 Xpert semi-quantitative categories

GeneXpert MTBC Detection Performance

DSHS-Austin Nov 2012 – Jan 2014, 1.7 Years

(1,178 sputum specimens)

AFB Smear Positive

	Mtb Reference Result		Total		
	Positive	Negative			
Xpert Positive	212	2	214	99%	Accuracy
Xpert Negative	3	185	188	99%	Sensitivity
Total	215	187	402	99%	Specificity
				53%	Prevalence
				99%	PPV
				98%	NPV

AFB Smear Negative

	Mtb Reference Result		Total		
	Positive	Negative			
Xpert Positive	41	5	46	98%	Accuracy
Xpert Negative	11	719	730	79%	Sensitivity
Total	52	724	776	99%	Specificity
				5%	Prevalence
				89%	PPV
				98%	NPV

GeneXpert Rifampin Resistance Performance

DSHS-Austin Nov 2012 – May 2015, 2.4 yr. (4,579 specimens)

	Rifampin Phenotype		Total	
	Resistant	Susceptible		
Xpert Rifampin-R	14	6	20	93% Sensitivity
Xpert Rifampin-S	1	792	793	99% Specificity
Total	15	798	813	2% Prevalence
				70% PPV
				99.9% NPV

Xpert Rifampin Resistant Probes A, B, C

DSHS-Austin Nov 2012 – May 2015

Patient	Xpert Probe	rpoB Mutation	DSHS Rifampin	CDC Rifampin	Comment
1	A	No Amplification	S	-	Xpert Ct =33 *
2	A	Leu511Pro	S	S	Van Deun mutation
3	B	Gin513Leu	R	Pending	
4	B	Phe514Phe	S	S	
5	B	Phe514Phe	S	S	
6	B	Phe514Phe	S	S	
7	B	Asp516Tyr	S	S	Van Deun mutation
8	C	Ser522Leu	R/S**	S	Van Deun mutation?

*Agar Proportion Resistant/MGIT 960 Susceptible

Xpert Rifampin Resistant Probes D & E

DSHS-Austin Nov 2012 – May 2015

Patient	Xpert Probe	rpoB Mutation	DSHS Rifampin	CDC Rifampin	Comment
9	D	His526Asp	R	R	
10	D	His526Asp	R	R	
11	D	His526Arg/Cys/Tyr	R	Pending	
12	D	His526Tyr	R	R	
13	D	His526Tyr	R	Pending	
14	D	His526Tyr	R	R	
15	D	Ser531Leu	R	R	
16	E	Ser531Leu	R	R	
17	E	Ser531Leu	R	Not tested	
18	E	Ser531Leu	R	R	
19	E	Ser531Leu	R	Pending	
20	E	Leu533Pro	R/S*	S	Van Deun mutation

*Agar Proportion Resistant/MGIT 960 Susceptible

Xpert Rifampin Resistant DSHS-Austin Nov 2012 – May 2015

Xpert Probe	# Total	# No Amplification	# Synonomous (Silent)	# Nonsynonomous	
				# Van Deun	# High level RMP-R
A	2	1		1	
B	5		3	1	1
C	1			1	
D	6				6
E	6			1	5
Total # (%)	20 (100%)	1 (5%)	3 (15%)	4 (20%)	12 (60%)

GeneXpert MTB/Rif in Texas

- Negative Predictive Value for Rifampin resistance approx. 100%
 - Predicts RIPE is adequate until growth-based drug susceptibilities become available
 - INH-R common
 - INH & EMB-R rare
- Approx. 15% of rifampin resistant predictions are false due to Phe514Phe silent mutation
 - CDC rapidly (2 days!) confirms or refutes Xpert rifampin resistance prediction

Xpert False Rifampin Resistance

- Not enough DNA in specimen can lead to false positive resistance results
- Silent Mutations
 - Phe514Phe
 - Arg528Arg
- Van Deun or ‘Disputed’ Mutations
 - Codons 511, 516, 533

Xpert False Rifampin Susceptibility

- Mutations outside the *rpoB* 81 base pair ‘hot spot’*
 - Ile572Phe, Val146Phe
- Heteroresistance
 - Xpert will not detect a minority resistant population when most of the population is susceptible
 - For Ser531Leu, 66% of population must be R, for Leu533Pro, 100% of population must be R **

- Siu et al. J Antimicrob Chemother. 2011; 66: 730–733
- Blakemore et al. J Clin Microbiol. 2010; 48: 2495–2501

Xpert Limit of Detection

- 131 CFU/mL commonly cited*
- DSHS-Austin Validation
 - 92 CFU/assay for Mtb H37Rv
 - 152 CFU/assay for CDC MPEP 2010 W (RMP-R)
- FDA-Authorized Package Insert:

Organism	Specimen Type	LOD Estimate	LOD Claimed
Mtb H37Rv	Sputum	414	600
	Sputum Sediment	2,046	3,000

* D. Helb et al. J Clin Microbiol. 2010; 48:229-237

Wisconsin State Laboratory of Hygiene TB NAAT Proficiency Testing

		Sample # & Mtb Concentration (CFU/ml)				
Year	Event #	1	2	3	4	5
2015	1	1.5 x 10 ⁵	1.5 x 10 ⁴	3 x 10 ⁵	MAC	3 x 10 ⁵
2014	2	3 x 10 ⁵ + inhib.	3 x 10 ⁴	MAC	3 x 10 ⁴	3 x 10 ⁵
2014	1	3 x 10 ⁵	MAC	3 x 10 ⁴	3 x 10 ⁵	3 x 10 ⁵
2013	2	3 x 10 ⁵	MAC	3 x 10 ⁵ + inhib.		
2013	1	3 x 10 ⁵	3 x 10 ⁴	MAC		
2012	2	1 x 10 ⁵	MAC	1 x 10 ⁵		
2012	1	1 x 10 ⁵	1 x 10 ³	MTB + inhib.		

Sample not scored due to lack of GX peer group consensus

13 (81%) of 16 Xpert labs missed; 18 (69%) of 26 MTD labs missed

Some Remaining Questions

- U.S. population-based distribution of rpoB mutations silent and low level RMP-R
 - CDC molecular surveillance pilot project
- Heteroresistance
 - What are the dynamics of transition from 0% resistant population to 100% resistant population?

Xpert Summary

- We like this test – a lot!
 - Changed NAAT from one of hardest to easiest assay we perform
- You will encounter discordant rifampin molecular & growth-based drug susceptibility results
- Discordant results may have clinical significance
- Rifampin resistance detected by Xpert must be confirmed by sequencing and growth-based drug susceptibility testing
- Consult experts at RMTCCs

The image features a classic hypnotic spiral background, consisting of concentric circles that create a 3D tunnel effect. The colors alternate between a vibrant red and a deep black. In the center of the spiral, the phrase "That's all Folks!" is written in a white, elegant cursive font. The text is slightly tilted and positioned across the middle of the spiral, appearing to float in the center of the tunnel.

That's all Folks!

MDR Relapse?

- 2006: 42 y.o. female w/sputum smear & culture positive MDR
 - 18 months Rx; Cured
- 2015: Recurrent disease, 4+ sputum smear positive
 - 1 y.o. daughter with pulmonary disease and irritability (? CNS disease)
 - Immediate Rx needed; MDR Rx considered
 - Mom's 2015 sputum was Xpert Mtb detected, **RMP-R not detected**
 - Mom's frozen isolate from 2006 case was Xpert RMP-R (Probe E)
 - Grandma had RIPE-S TB in 2011; mom & daughter were close contacts
- Based on history & Xpert, mom & daughter treated for susceptible TB
- Mom's 2015 isolate was RIPE-S
- Genotypes
 - Mom 2006 PCR01132
 - Mom 2015 PCR13947
 - Grandma 2011 PCR13947