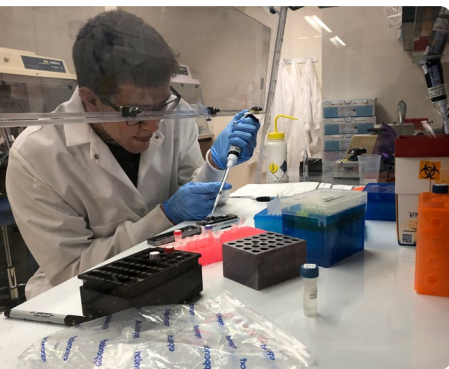


# APHL-CDC Infectious Disease Laboratory Fellowship

## Join the Front Lines of Public Health!

The [Association of Public Health Laboratories \(APHL\)](#)—[US Centers for Disease Control and Prevention \(CDC\)](#) Infectious Diseases Laboratory Fellowship is an exciting opportunity for post-bachelors, -masters and -doctoral scientists to apply their skills in a public health setting. This one- to two-year program prepares fellows for careers in public health laboratories and helps support critical public health initiatives related to infectious diseases.

Fellows are matched with local, state or federal (CDC) public health laboratories, where they are trained in bench-level laboratory methods while assisting with high priority infectious disease research, testing, surveillance and control measures. Fellows also receive in-depth, specialized training within a disease-specific track; tracks vary each year, but may include foodborne illnesses, vector-borne diseases, respiratory diseases and more. Track assignments are based on the fellow's interests and the needs of the host laboratories.



Apply by  
**Feb. 28  
2022!**



### What are public health laboratories?

[Public health laboratories](#) are highly specialized public-sector laboratories that monitor and detect a range of health threats, such as genetic disorders in newborns, infectious diseases, environmental hazards and biological terrorist agents and more.



### What will my fellowship look like?

Fellowships run one to two years. Each fellow is trained in nine [public health laboratory core competencies](#) in addition to their specialized track, and works on unique program-specific projects.



### What are the program benefits?

- Competitive stipend
- Health insurance allowance
- Relocation reimbursement
- Professional development fund
- APHL student membership
- Build a professional network



### What do I need to apply?

- All applications will need:
- Undergraduate and graduate transcripts
  - Three (3) letters of recommendation
  - Resume/CV
  - Personal narrative
  - Proof of US citizenship or permanent residency

Learn more about this and other  
**APHL-CDC Fellowship Programs:**  
[www.aphl.org/fellowships](http://www.aphl.org/fellowships)

Follow Us! #APHLFellows

