



Analysis. Answers. Action.

www.aphl.org

Regional Consortia Monitoring and Evaluation

Institutional Research and Quality Systems

1/27/2020

Measures of Impact

Sustainability

- Ability to maintain their core business activities
 - Examples: some level of structure exists (chair, strategic plan or priorities, mission/vision), regular conference calls among network members and participation, resources are available

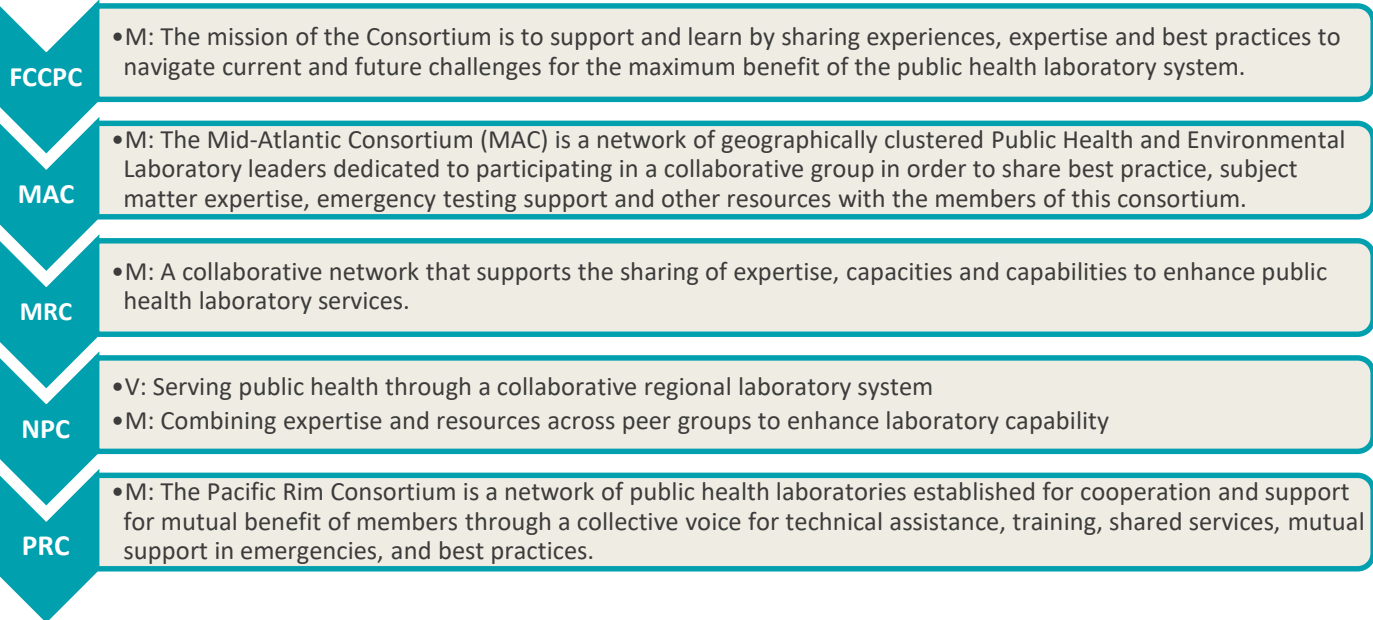
Effectiveness

- Activities that lead to positive change
 - Examples: skill growth, COOP/improved ability to respond to emergencies, surge, mutual aid, knowledge sharing, quality/safety



Sustainability: Mission, Vision, Strategy

5 out of 7



5 out of 7
strategic
charter
or Map

NEEPHLD	NPC	MRC	MAC	SEC	PRC	FCCPC
		X	X	X	X	X



Last updated: 6/27/19
Source: Sudaba Parnian, Senior Specialist M&E, APHLweb Regional Consortia

Analysis. Answers. Action.

www.aphl.org

Sustainability: Meeting Structure & Frequency

	NEEPHLD	NPC	MRC	MAC	SEC	PRC	FCCPC
Conference Calls	N/A	Qtly	Monthly	Monthly	1/year	Monthly	Qtly
In-Person Meetings	3/year	1/year	1/year	1/year	1/year	1/year	1/year
Meeting Approach	Agenda driven	Agenda driven	Agenda driven	Agenda driven and Topic Specific	Agenda driven	Agenda driven	Agenda driven

Every network has some type of meeting schedule and is agenda driven



Last updated: 6/27/19
 Source: Susie Zanto, APHL Regional Consortia Consultant

Analysis. Answers. Action.

www.aphl.org

Sustainability: Meeting Participation Rates

Number of Active Consortia	Year	In-person Meetings				Conference Calls			
		Planned	Available Agenda	Available Minutes	Avg. Participation Rate	Planned	Available Agenda	Available Minutes	Avg. Participation Rate
2	2014	4	5	4	94%	4	4	1	100%
3	2015	5	2	2	100%	5	9	8	69%
3	2016	5	no data	no data	no data	5	no data	limited data	limited data
4	2017	6	4	4	86%	15	2	2	86%
7	2018	9	8	8	89%	36	17	17	89%
7	2019	9	6	6	93%	39	23	24	89%



Last updated: 1/27/2020

Source: Sudaba Parnian, Senior Specialist M&E, APHLweb Regional Consortia

Analysis. Answers. Action.

www.aphl.org

Effectiveness: Funded Projects

Number of Active Consortia	Year	CDC Epidemiology and Lab Capacity (ELC) Grants			APHL Innovation Grants		
		Number of Applications	Number of Awards	Percent Funded	Number of Applications	Number of Awards	Percent Funded
3	2016-2017	no data	no data	no data	3	3	100%
4	2017-2018	4	4	100%	4	4	100%
7	2018-2019	4	4	100%	6	6	100%
7	2019-2020	7	6	86%	5	5	100%

Last updated: 1/27/2020

Source: Lorelei Kurimski, Director Institutional Research/Quality Systems, Bertina Sue, Manager Quality Systems, and Susie Zanto, APHL Regional Consortia Consultant



Analysis. Answers. Action.

www.aphl.org

Effectiveness: APHL Innovation Grant Outcomes

See details under *Publications*:

https://www.aphl.org/programs/quality_systems/Pages/Regional-Consortia.aspx

